

Residential Systems

Commercial and Industrial Systems

Engineered Systems

Community Water Systems



KINETICO

Leading the world in
water solutions.



Commercial

Filtration Systems

Since 1970, Kinetico has been engineering and manufacturing water improvement products that are innovative, user friendly and responsive to customers' needs. Kinetico meets the demand for a diverse mix of applications: residential, commercial, industrial and municipal. Our advanced technology and commitment to you continue to be the basis for our rapid global growth in nearly 100 countries.



10845 Kinsman Road, P.O. Box 193,
Newbury, OH 44065 USA
440-564-9111 FAX 440-564-9541
<http://www.kinetico.com>



KINETICO®

Commercial Filtration Systems

MAKING A DIFFERENCE WITH INNOVATION.

MODELS 100 2000 4000 6000 8000 10000 12000

Kinetico
understands your
company's water
treatment needs.
We deliver the
quality you expect
with a variety of
standard features
and a selection
of options for
your specific
application.

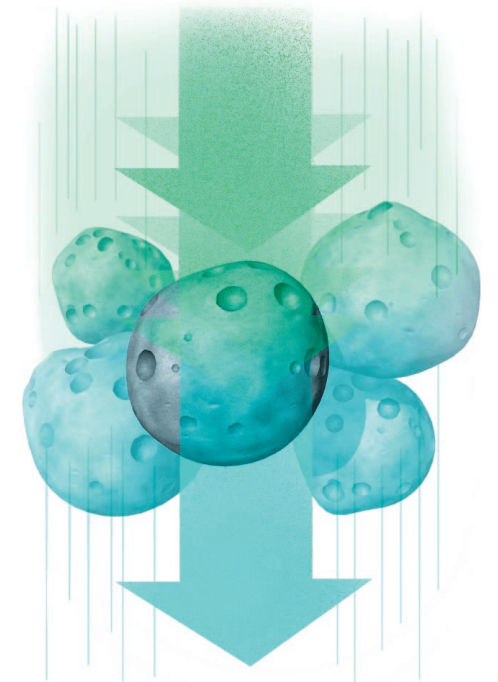


Filtration FEATURES

- ✓ Automatic, non-electric operation
- ✓ Metered, demand control
- ✓ No downtime during backwash
- ✓ Effective filtering capabilities
- ✓ Efficient use of water for backwashing
- ✓ Corrosion-resistant

KINETICO'S EXCLUSIVE MACROLITE® MEDIA

When fine prefiltration is critical, this innovative media is used to remove particles as small as three microns. It normally requires no conventional pretreatment such as coagulation or flocculation to remove particles of this size. Other media are available for different applications.



Standard

- Various Product Sizes** provide from six to 180 gallons (23 to 680 liters) of filtered water per minute.
- Non-Electric Kinetico Control Valve** eliminates the need to adjust, set, repair or replace timers or computers.
- Twin Tank System** provides an unlimited supply of filtered water.
- Effective Filtering Capability** assures continuous, high quality, filtered water.
- High Quality Filter Media** is customized to solve your water's odor, iron or turbidity problems.
- Compact Media Beds** require less water for backwash.
- Parallel Service** flows water through all tanks simultaneously. This offers the advantages of a larger tank system by reducing the flow rate per cubic foot of media.
- Corrosion-Resistant Valve and Tanks** withstand the harshest environments.

Options

- Skid Mounted Systems** eases placement and installation, especially with multiple unit configurations.
- Backwash Interlock** reduces flow requirements for backwashes by preventing multiple backwashes from occurring simultaneously.
- Modular Expansion** is available when higher flow rates are needed or as your water demand grows.
- DIFFERENT MEDIA FOR SPECIFIC APPLICATIONS**
- Carbon** removes chlorine to improve product water quality.
- Macrolite® Media** filters fine particles better than traditional media and flushes clean at lower backwash rates. Provides better filtering results and saves water.
- Calcite** raises the pH of acidic water.

Multimedia Systems offer a variety of filtration options by using multiple types of media within one system.

Greensand oxidizes and filters iron, manganese and hydrogen sulfide from water supplies.

Accessories

Softeners remove hardness minerals from water to prevent scaling of pipes and water using equipment.

Chemical Feed Equipment injects chlorine into the water to oxidize iron or sulfur so it may be filtered by the Kinetico Filtration System.

Reverse Osmosis improves product water quality by reducing dissolved solids in water.